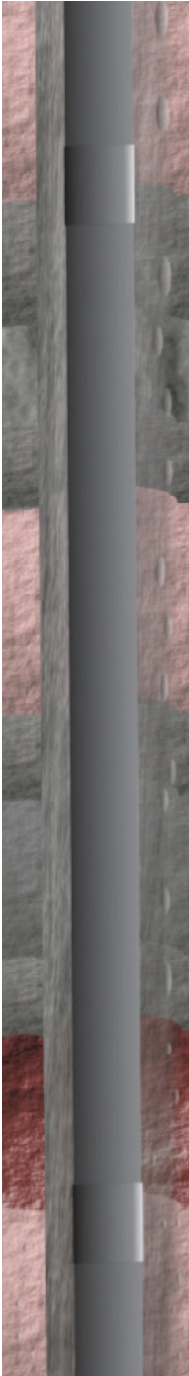


SCVF - GM DIAGNOSTICS



SCVF - GM: Surface casing vent flow and gas migration source identification

Noise Temperature Log:

- Identifies area of interest by recoding specific noise signatures generated by gas movement
- Sound frequency analysis provides important information even under the quietest of conditions
- The new "Full-Well Frequency Analysis Vido Set" provides a unique image of the sound spectrum aiding in interpretation

Radial Bond Log:

- Casing Inspection (OD and ID) and RBL for a full well profile in **one run**
- Full memory and surface readout available
- Slim hole design (1 11/16") allows for through-tubing applications
- Hostile environments (H₂S / CO₂ rated)
- Expandable finger lengths for larger tubulars

Cased Hole Analysis Tool (CHAT):

- Provides calibrated thermal/epithermal neutron porosity for fluid identification
- Provides calibrated formation density for formation and annular gas location
- Pinpoints location of gas sources contributing to surface casing vent flow
- Identifies nuisance gas sources (and productive sources) missing by open hole logging operations resulting from invasion

	CHAT	NT	RBL
OD	43 mm 83 mm	35 mm	43 mm 79 mm 89 mm
Press.	103 MPa	103 MPa	172 MPa
Temp.	150°C	175°C	204°C
H₂S / CO₂	yes / yes	yes / yes	yes / yes

